

art  
et  
al.

Art et al.

Peer to Peer 04

Matt and John



easy  
read

This is an Easy Read resource about  
Art et al.'s Peer to Peer 04



Peer to Peer commissions new artwork from two artists working together internationally.



One artist will be working out of a supported studio – a creative environment for individuals with specific health or social needs that encourages and supports the different art practices of artists.



The outcome of the collaboration will take any form, be in any medium and at any scale.



For the fourth commission, Art et al. worked with John Powell-Jones, an artist working just outside Manchester in the UK.



John's work looks at power structures, and personal and imagined realities.

Across 2020-21 he has taken part in several group exhibitions and had two solo shows in the UK.



Art et al. paired John with Matt Robertson.

Matt has worked out of the supported studio ArtGusto in Australia since 2015.



Matt is always thinking of his art and what he is going to create next. He brings characters to life on paper, that have come out of his imagination.



Once a week for eight weeks, they met each other on zoom.

From the beginning they decided that that would tell a story each, using characters they both create. Each character would travel into the world of the other, and see what happened!



Matt created two characters called Mhought and Flaze. They are homeless people, who take each day one day at a time, and are grateful to be alive.



John created Atamur, who has created a protective suit to look after the vulnerable nervous system underneath.



Of the collaboration Matt said:  
"I found it engaging and it brought together two continents. It came at the right time for me. It gave me my mojo back and helped me to be creative."



Of the collaboration John said,  
"I've found the project really positive, I feel that Matt and I immediately struck up a great rapport, and it was a very easy process to share and develop ideas between us. My favourite part of the project has been getting to know Matt and Sharon (the facilitator from ArtGusto in Australia) and seeing how the work developed each week. The process of collaborative storytelling made it really exciting to see what would develop week by week."



You can see more about the Peer to Peer collaboration and read their interview about the process here:

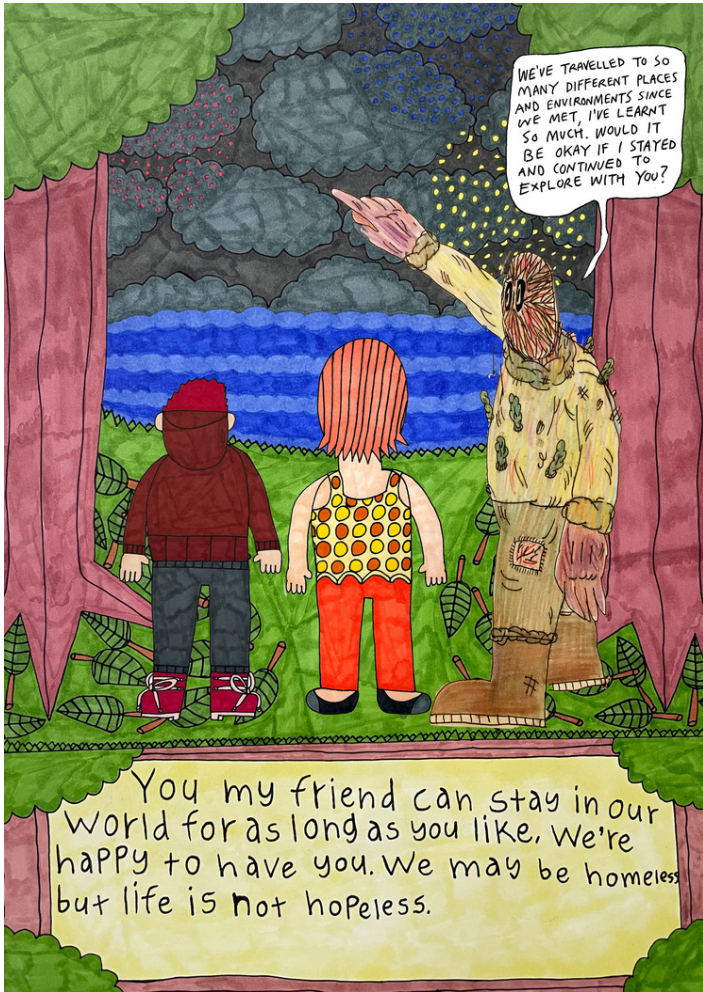
<https://artetal.org/peer-to-peer/collab-04>



Here is the moment the two characters met, followed by a few examples of each artist's story. Matt's background drawing is always on the left, and John's is on the right



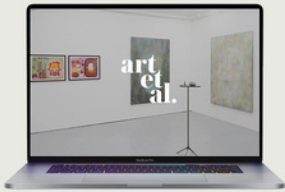




# Contact Us



If you have questions about Art et al. or want to know more about the Peer to Peer collaborations, you can contact us using the information below.



Website: [www.artetal.org](http://www.artetal.org)



Email: [info@artetal.org](mailto:info@artetal.org)



Instagram: [@art.etal](https://www.instagram.com/art.etal)



Twitter: [@art\\_etal](https://twitter.com/art_etal)