



art
et
al.

Art et al. X Ketemu Peer to Peer 09

Artists Winda and Mawarini working together



easy
read

This is an Easy Read resource about
Art et al.'s Peer to Peer 09

Contents Page

What is a Peer to Peer collaboration?

1

Who were the people involved?

3

What happened during the collaboration?

4

What were the outcomes?

5

What were the thoughts of those involved?

7

Contact Art et al.

8

What is a Peer to Peer collaboration?



A Peer to Peer collaboration is where 2 artists chat, and work together, to make new artworks



X 3

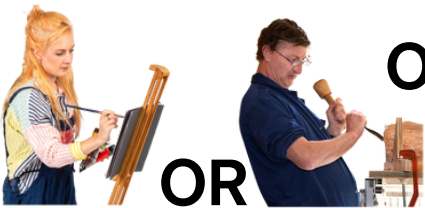
The 2 artists work together for up to 3 months altogether



OR



The artists can meet, chat and share ideas and art over Zoom. Or they can send short videos to each other over email



OR ?

They can make new artwork by themselves, using any material that they like



Or they can make new artwork together, so they work on the same piece of artwork

What is a Peer to Peer collaboration?



X 3? X 4?
X 10?

The outcome of the collaboration is left open. This means it can be any amount of work, made in any medium, and made at any scale



One artist will usually be working out of a supported studio.

By this we mean a creative space for individuals with specific health or social needs that supports the different art practices of each artist

Who were the people involved?



For the 9th collaboration, Art et al. worked with Indonesian disabled artist Winda Karunadhita



Winda is interested in decorative arts - by this we mean artwork with a lot of detail within it

The theme for most of her work is about the life and culture of people who live in Bali - for example Balinese dancers and lots of different flowers



Art et al. paired Winda with Australian artist Mawarini



Mawarini likes to document everyday life through drawing, papercuts (the action of cutting paper into different shapes), and through animation

With her animations, she makes her drawings come to life with small moving parts

What happened during the collaboration?



For the collaboration, Mawarini just happened to be in Indonesia, rather than Australia



This meant that the artists could meet in-person twice during their collaboration. This has never been able to happen before for a Peer to Peer collaboration



This also meant that the artists worked together on all the artwork they created. Some of it was made when they were in the room together. Then they posted drawings to each other, so that the other person could work on it too



OR



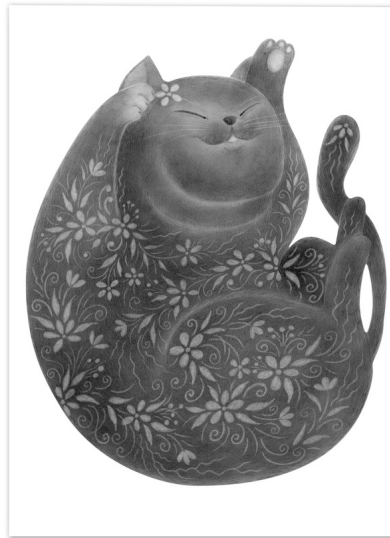
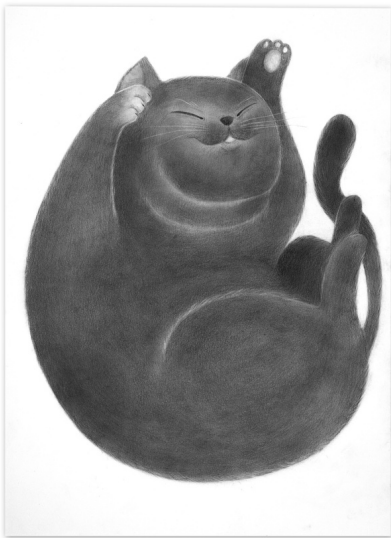
As their theme was 'friendship' it was clear that a friendship had been built, given that all the outcomes were jointly made. This was following many conversations on Whats'sApp, in-person and on Zoom

You can see more about this Peer to Peer collaboration, read their interview, and watch a short film about their collaboration here:

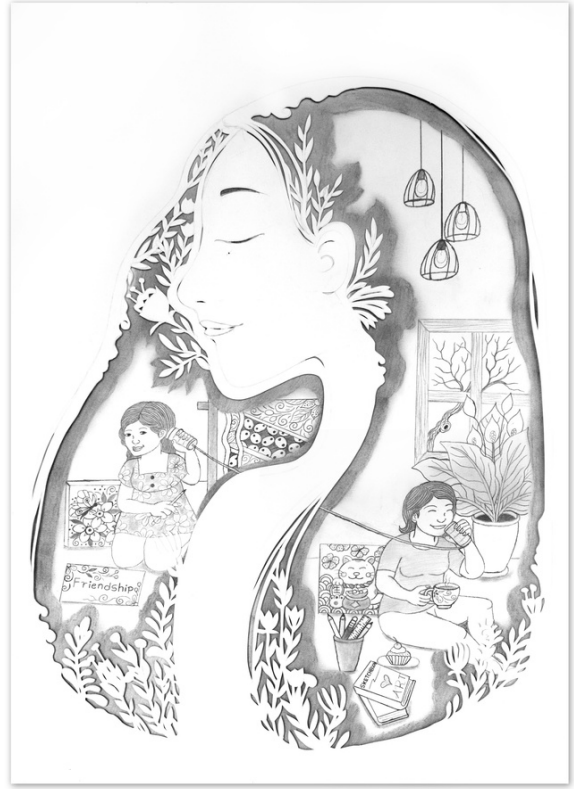
artetal.org/peer-to-peer/collab-09

What were the outcomes?

Here are some images of the artworks created together by Winda and Mawarini. Both artists worked on each piece together



What were the outcomes?



What were the thoughts of those involved?

I thought that...



Winda said, "I wanted to show about our friendship and show that everything becomes easier and more beautiful when we have good friends. As a child, I didn't have many friends and I was afraid to socialise, so it was an unpleasant time in my life. As an adult, I have tried to be more open and social. It turns out that having many distant friends makes me happier."

I am very happy to be able to participate in this project and also to get a new friend in my life."

I thought that...



Mawarini said, "Hopefully, the audience can see our friendship through our artwork, regardless of our cultural background. We laugh, share, get inspired, create, and enjoy the art journey together."

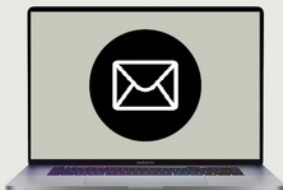
Contact Us



If you have questions about Art et al. or want to know more about the Peer to Peer collaborations, you can contact us using the information below.



Website: www.artetal.org



Email: info@artetal.org



Instagram: [@art.etal](https://www.instagram.com/art.etal)



Twitter: [@art_etal](https://twitter.com/art_etal)