

art
et
al.

Art et al.

Curatorial Mentorship 01

Eden and Stella



easy
read

This is an Easy Read resource about
Art et al.'s Curatorial Mentorship 01

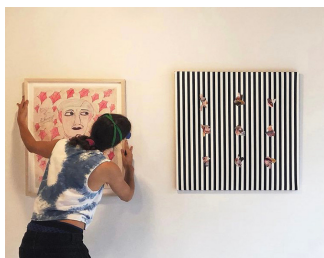
What is a Curatorial Mentorship?



A Curatorial Mentorship is a creative digital project. At the moment is all happens online.

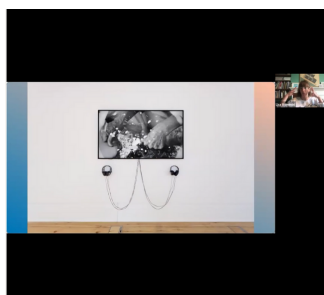


It pairs an artist from a supported studio with professional curator from somewhere in the world.



A curator is someone who selects artworks to show in exhibitions.

They also write the labels that go next to the artworks and do other things like writing long texts about the artists to go into books.



The curator talks to the supported studio artist about how to make an exhibition. It might be in a gallery or museum, or online.

Supported Studio Artist: Who is Eden Menta?



Eden Menta is an artist from Arts Project Australia – a supported studio in Melbourne.



Eden is an artist whose practice includes photography, collage, drawing and painting.



For this project Eden was interested curating an online project with sound, art, and an opportunity for everyone to contribute.



Eden was also interested in disability and gender. Eden chooses to go by the pronoun 'they' instead of 'she' or 'him'.

Curatorial Mentor: Who is Stella Sideli?

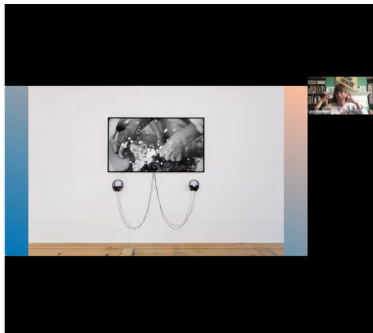


Stella Sideli is a curator and researcher.

She is Italian and lives in Europe.

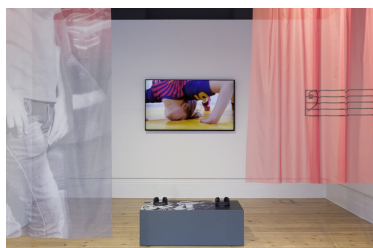


Stella has worked for different galleries and studios making exhibitions, including at Tenderpixel and at Somerset House in London.



Stella studies feminism, as well as gender and sexual practices that are different to the 'norm'.

Feminism is the belief that women should be allowed the same rights, power, and opportunities as men, and be treated in the same way.



Stella is interested in artwork that combines image, sound and movement.

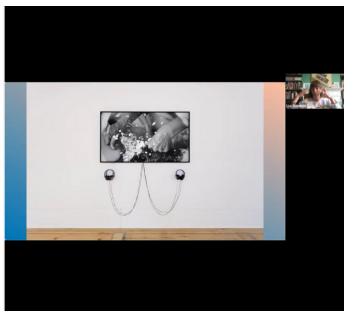
How did the artist and curator work together?



Stella and Eden had an introduction to each other from Art et al. team members, during an online zoom meeting.



Stella and Eden had 6 one-to-one online zoom meetings together, to talk about art and ideas for curating.

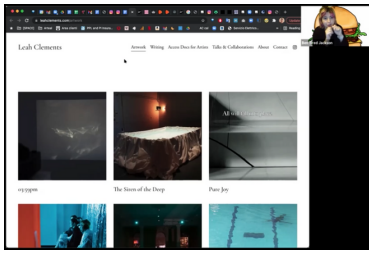


Stella and Eden talked about ideas of disability, queerness, safe spaces, community and representation. By queerness we mean having a different gender or sexual identity to others.

These ideas helped Eden select the artists for their project.



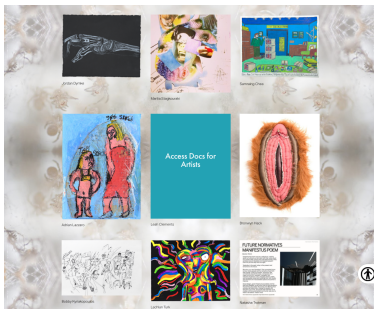
Eden selected 6 artists fromd Arts Project Australia – the supported studio that they attend in Australia.



Stella showed Eden contemporary artists from the United Kingdom to select from, that fitted under their themes of queerness and disability.



Eden chose 3 artists from the United Kingdom, from Stella's selections. Natasha Trotman pictured here, is one of the selected artists.



Stella helped Eden decide on the design and look of their digital project, to go on the Art et al. website.

Stella also helped Eden to write about the project.

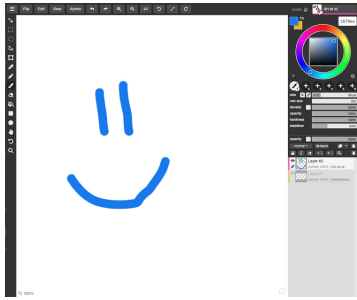


Eden's main project is called 'Minty Visions'.

It includes 9 artists, as well as sound and background design.

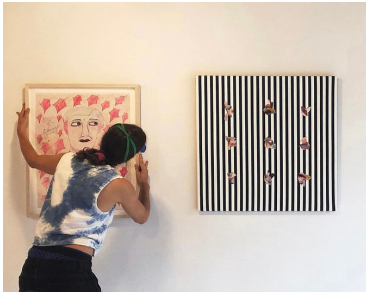
The sounds are background sounds from 'Star Trek'.

The background design is lots of little spiders made into a pattern



Eden also made a community project called 'Art Puke.' It is an online drawing project where anyone can continue to add to the drawing. They hope everyone will enjoy contributing to the drawing over time.

The link for this is below – follow the instructions on screen to add to it:
https://aggie.io/ur_byq4yyy



Through the Curatorial Mentorship Eden was able to connect with a professional curator and learn the skills of curating by making their own digital project

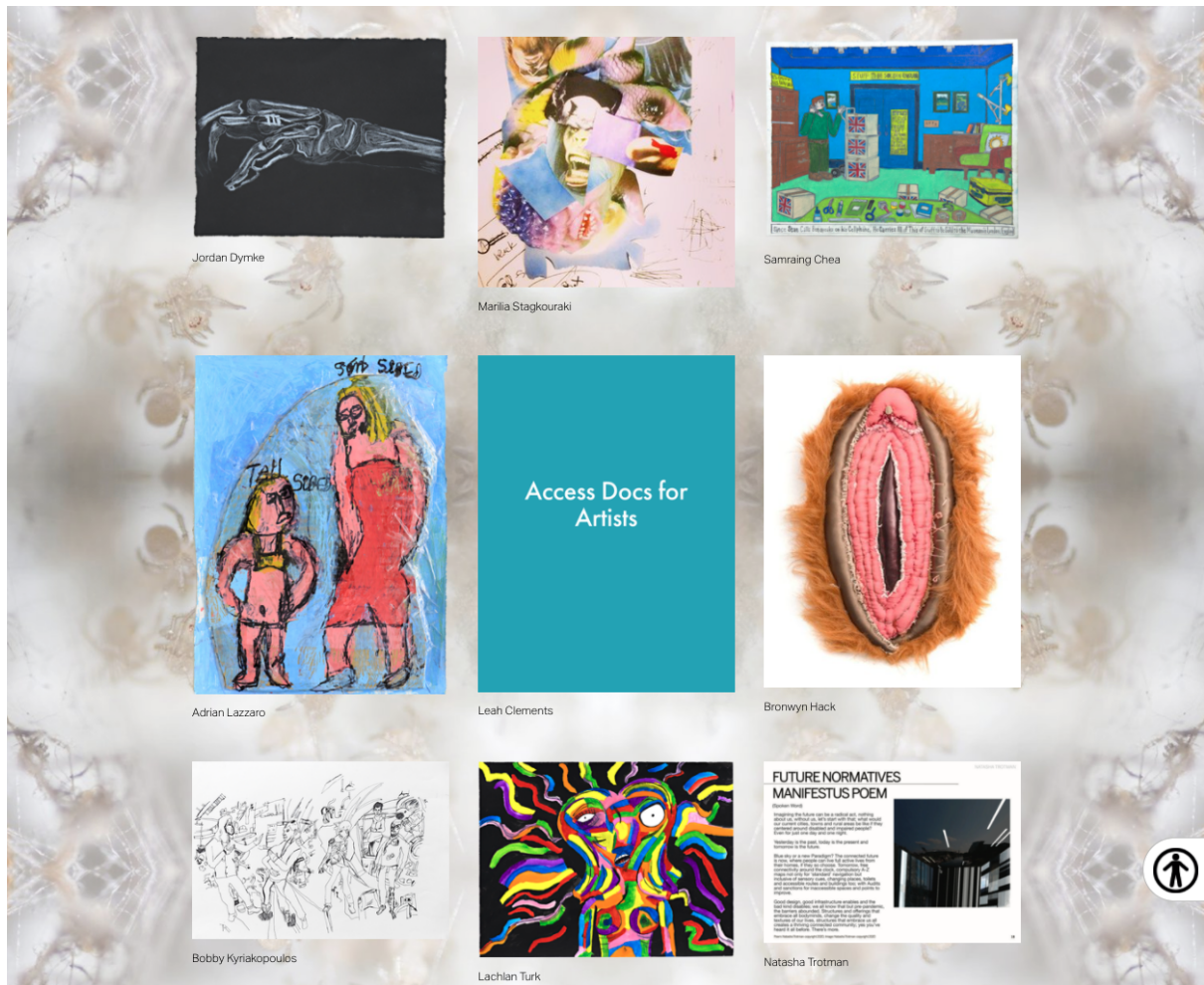


Eden says of the mentorship: "I'm so glad I've been able to connect with someone far away during lockdown. I've been telling people I've gone to Italy every Thursday for the past month. Also, I've enjoyed working with someone new & learning new things."



Stella says of the mentorship: "Working with Eden has brought me a lot of joy - they are a volcano of creative ideas. We connected especially when talking about creating safe spaces for queer and non-binary artists with disabilities."

Here you can see some screen shots from the Art et al. website showing this Curatorial Mentorship



Art Puke

Art Puke is an interactive and collaborative drawing project conceived by Eden Menta. Please read the engagement guidelines before participating.

Contribute to Art Puke

Engagement Guidelines

- To start drawing, first, click the "new layer" icon to the middle right of the page. It looks like a white sheet of paper.
- You can then participate by zooming in on the panel and drawing.
- You can draw in relation to other people's work, or draw your own.
- Do not deface or cover the work of others. You can add and collaborate.
- Do not write or draw anything that might offend and discriminate between genders, sexualities, abilities, cultures and nationalities. Understand this a space created by and for queer people with disabilities.

Contact Us



If you have questions about Art et al. or want to know more about the Curatorial Mentorships, you can contact us using the information below.



Website: www.artetal.org



Email: info@artetal.org



Instagram: [@art.etal](https://www.instagram.com/art.etal)



Twitter: [@art_etal](https://twitter.com/art_etal)